

UK MILITARY AIRFIELDS GUIDE 2019 EDITION

To get the most up-to-date maps why not purchase a book dedicated to the military airfields of the United Kingdom by Peregrine Bush

Scope: This essential guide features 22 maps of the major operational airfields with associated units and airfield radio frequencies plus 22 maps of minor and satellite airfields.

Size: A4

Pages: 76 in full colour

Price: £22.99 plus postage and packing

**GET ONLINE TODAY
AND ORDER FROM**

www.pb-photos.com



**UK MILITARY
AIRFIELDS GUIDE
2019 EDITION**

“...the aviation enthusiasts and
photographers bible...”
Display Frequency, UK Airshow Review

Designed, produced and researched by
PEREGRINE BUSH

207 Sqn
F-35B OCU

Runway 01

Currently operating from RAF Marham
retired in March 2019. F-35B Lightnings
getting aircraft from 2020. 207 Sqn
Wing, 3 Force Protection Wing, Tactical

RAF LEEMING [EGXE]

Yorkshire

CURRENT UNITS

- Royal Air Force
100 Squadron

Hawk T1/T1A
- University Air Squadron
Northumbrian

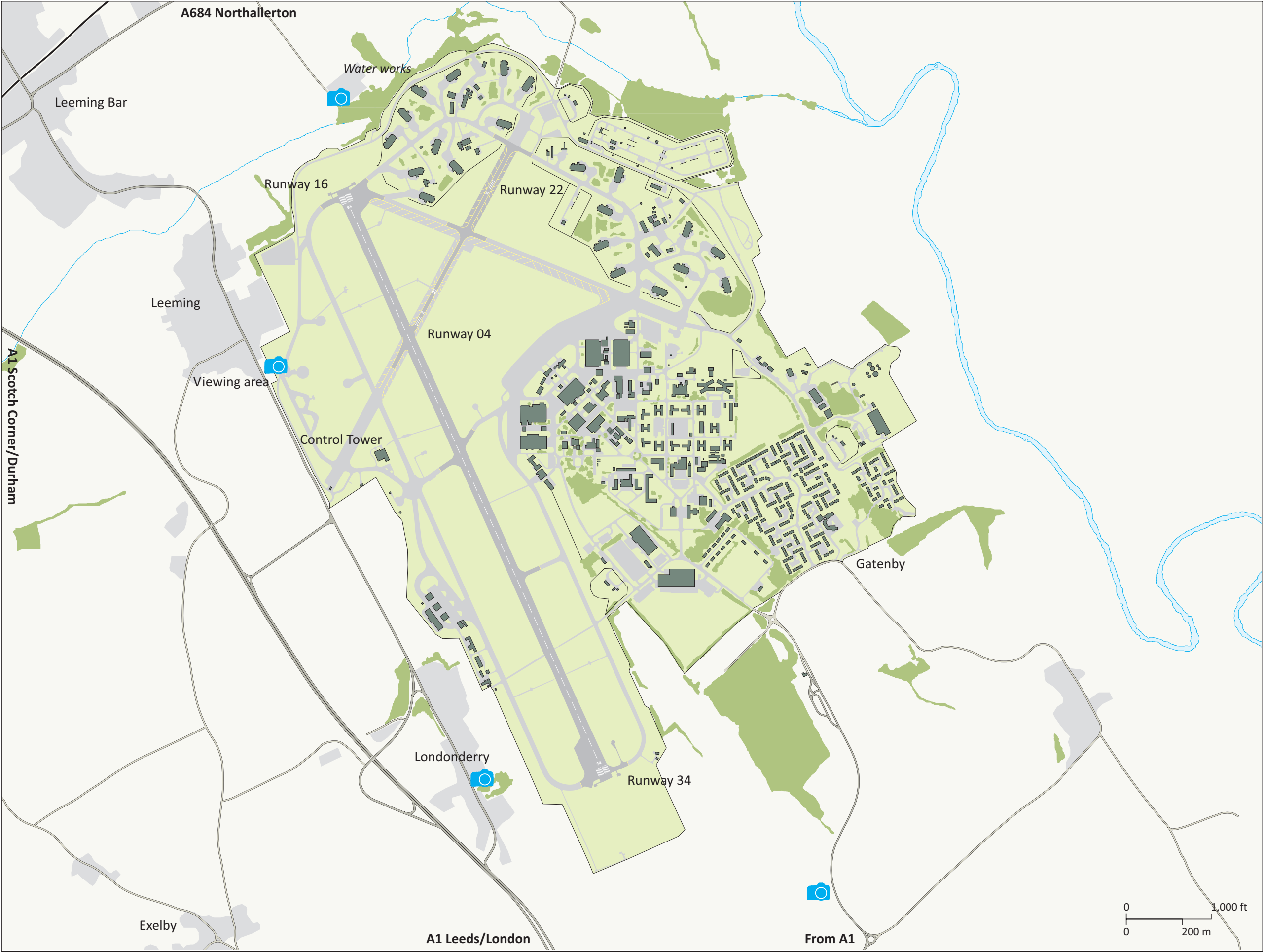
Tutor T1

Air Experience Flight
11 Air Experience Flight Tutor T1
<http://www.raf.mod.uk/rafleeming/>

RADIO FREQUENCIES

Frequency	Usage
120.500	Tower
368.925	Tower
379.900	Ground
127.750	Approach
386.575	Approach
231.450	Director
123.300	PAR
318.100	PAR
375.450	PAR
262.950	Zone
369.475	ATIS
241.950	JFACTU Jackpot
264.500	JFACTU Jackpot
341.250	JFACTU Jackpot
370.200	JFACTU Jackpot
234.975	Operations
259.025	Operations
117.000	Air/Air
117.175	Air/Air
122.650	Air/Air
137.450	Air/Air
142.050	Air/Air
142.325	Air/Air
142.375	Air/Air
142.875	Air/Air
241.725	Air/Air
298.525	Air/Air
338.000	Air/Air
339.150	Air/Air

Source: www.milscanners.co.uk



Disclaimer

The information within this map is based upon or drawn from various authoritative sources and whilst all reasonable care has been taken in the preparation of this map no warranties can be given as to its accuracy and/or no reliance should be placed upon the same without further detailed inspection and survey. The publishers cannot therefore accept any liability or responsibility for any loss or damage and indeed would be grateful to receive notification of any errors or inconsistencies. No reproduction whatsoever of this map or any part thereof is permitted without the prior consent of the copyright owners. Respect the land around the base, and do not trespass on or damage any property. Take your rubbish and litter home with you. Do not park in front of crash gates, or on the access tracks leading to them. You will almost certainly be asked move your vehicle as parking here can impede rapid access by the airfield crews to any emergency.

Cartography and designed P. Bush
Map reproduced using imagery from Google Maps

© May 2011. Revised December 2011
Reproduction of the contents of this map in any manner whatsoever is prohibited without the prior consent of the publisher.

www.pb-photos.com